



# TRACE **Membership**

# TRACE **at-a-Glance**



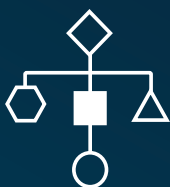
We are **recognized globally** for establishing anti-bribery standards and **trusted by thousands** of companies around the world



**Over 1 million** individuals **across 160 countries** have completed our compliance training



We help companies **understand** and **implement** best practices



Our shared-cost model makes it **easier** and **less expensive** to maintain a dynamic compliance program



Access to practical tools, coupled with community, **sets us apart** from other organizations

# Member Benefits



## Training & Communications

- Access to the TRACE Learning Management System (LMS) where you can deploy training for an unlimited number of employees and third parties
- Full-length training courses on a wide variety of compliance and governance topics offered in multiple languages
- Selection of refresher courses, animated vignettes, microlearning modules, webinars, podcasts, training aids and memes
- Advanced training for individuals in the field of compliance or who are regularly exposed to compliance risk

---

## Risk Assessment & Monitoring

- Local law resources, country risk information and other risk assessment guidance
- Model policies and checklists on anti-bribery, ESG, sanctions, human trafficking and other
- International network of anti-bribery attorneys at designated TRACE Partner Firms




## Community & Benchmarking

- Member surveys facilitate compliance program benchmarking
- Senior TRACE representatives are available to discuss industry trends and best practices
- TRACE events offer several opportunities throughout the year to benchmark with peers in person

# Why Join TRACE?

TRACE membership helps companies conduct business ethically while remaining competitive. Joining TRACE provides a low-cost alternative to increasingly expensive and time-consuming corporate compliance.

- Reduces the time and continuous labor associated with compliance
- Allows you to easily deploy, track and audit compliance training for employees and third parties
- Helps you develop and maintain a dynamic compliance program
- Offers community and benchmarking for advancing compliance standards
- Provides Resource Center and Compendium access to keep your team informed of the latest best practices, enforcement trends and regulatory changes
- Demonstrates your organization's commitment to commercial transparency



I think TRACE is a great compliance organization and I'm always favorably impressed with every interaction I have with the TRACE team. The quality of support and resources we receive from TRACE is exceptional and the TRACE Forum is among the best trainings I've ever attended.

**Steven White**

*Manager of Investigations (North America),  
Xerox Corporate Security*



# Joining TRACE

TRACE members form the TRACE Compliance Community™, a global network of companies that are committed to advancing commercial transparency worldwide, and willing to share and establish best practices. All TRACE members commit to a high level of transparency in their commercial transactions.

TRACE members pay an annual membership fee and may extend benefits without limit to all employees, as well as to first-tier wholly and majority-owned subsidiaries. TRACE offers two corporate membership options: Standard and Enterprise.

	Standard	Enterprise
Compliance Training Access		
Learning Management System (LMS)	✓	✓
LMS Single Sign-On (SSO)	--	✓
LMS Customizations	✓	✓
LMS User Management	✓	✓
Access to Full Course Library	✓	✓
Course Customizations	✓	✓
Course Languages	TRACE core languages	All available languages
TRACEpro	5 seats	10 seats
Annual Forum	One (1) ticket included	Two (2) tickets included
TRACE Workshops	✓	✓
Live Monthly Webinars	✓	✓
Resource Center	✓	✓
Opportunity to Benchmark	✓	✓
Access to Compliance Professionals	✓	✓
Starter Kit	✓	✓

To learn more about TRACE’s Corporate membership options, write to [membership@TRACEinternational.org](mailto:membership@TRACEinternational.org) or call +1 410.990.0076.



TRACE is a non-profit international business association dedicated to anti-bribery, compliance and good governance. Founded in 2001 to make it easier and less expensive to navigate and mitigate business bribery risk, TRACE is credited with establishing anti-bribery standards that have been adopted worldwide. Driven by the needs of its members, TRACE is continuously developing tools and resources that power compliance programs. TRACE is headquartered in the United States and registered in Canada, with a presence on four continents.



**+1 410.990.0076**



**membership@TRACEinternational.org**



**www.TRACEinternational.org**



**151 West Street, Annapolis, MD, USA 21401**